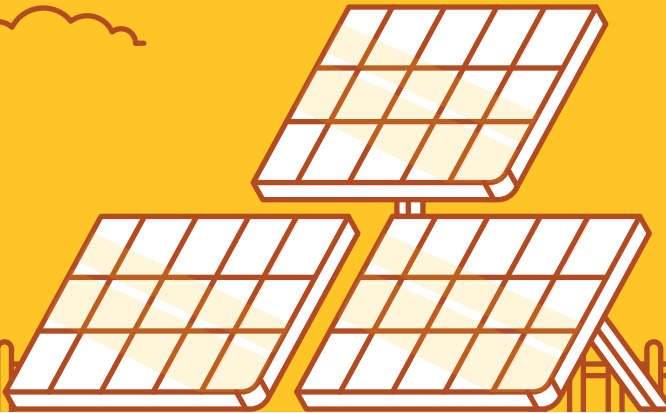




Want to Go Solar?



Do you want to go solar but don't want to break the bank?

As Michigan's renewable energy leader, Cherryland makes going solar accessible and affordable for all our members.

For just \$600 (or \$10/month), you can plug into the SpartanSolar community array in Cadillac. You'll receive credits on your bill for the energy produced by your panel(s) for 15 years.

Interested in a panel subscription? Or two? Or ten?

[Learn More About Spartan Solar](#)

Cherryland also offers two additional solar programs for members who wish to own their own solar arrays. For more information, [visit our website !](#)

Want to learn more about the latest energy news and issues that affect your co-op?

Listen to our podcast Co-op Energy Talk on iTunes and Podbean



Follow us at:



www.cherrylandelectric.coop

Copyright © Cherryland Coop All rights reserved.

Want to change how you receive these emails?

You can [unsubscribe](#) from this list.



Save Energy, Save Money!



Want a few extra bucks in your pocket? Silly question, we know.

Cherryland offers two services to help you save both energy and money.



Free Home Energy Assessments

Yep, you read that right—our in-home energy assessments are absolutely free. Schedule an appointment with our energy use advisor and get some pointers on how to make your habits and home more energy efficient.



Energy Efficiency Rebates

Need a new refrigerator, clothes washer, or just a LED light bulb? We offer rebates for all those Energy Star-rated purchases! Just fill out a rebate form, give us a copy of your receipt, and you will see a credit on your next electric bill.

Ready to save?

[Learn More](#)

Want to learn more about the latest energy news and issues that affect your co-op?

Listen to our podcast Co-op Energy Talk on iTunes and Podbean



Follow us at:



www.cherrylandelectric.coop

Copyright © Cherryland Coop All rights reserved.

Want to change how you receive these emails?

You can [unsubscribe](#) from this list.



Power's Out. What Now?



We've all been there, and it's no fun losing power (although it can be fun playing flashlight tag). Cherryland works hard to make sure that doesn't happen, but if it does, you can report your outage in one of two ways:



Report through SmartHub on the app or via our website



Call us at 231-486-9200

If you call us to report an outage, just know that the phone lines can get busy and you may have to wait. Or just forget the wait and report your outage quickly and easily through SmartHub.

Want to know the status of your outage?



Stay up-to-date with our website's Outage Center. Our interactive outage map shows you the status of any outage on our system at any time.



And if we are experiencing a large outage, we also post updates to our Facebook page. It's never a bad place to check and see what's going on in our service territory.

[Visit Our Outage Center](#)

Want to learn more about the latest energy news and issues that affect your co-op?

Listen to our podcast Co-op Energy Talk on iTunes and Podbean



Follow us at:



www.cherrylandelectric.coop

Copyright © Cherryland Coop All rights reserved.

Want to change how you receive these emails?
You can [unsubscribe](#) from this list.



Help Local Nonprofits With Your Pennies



While we could all use a little help sometimes, some of us need it more than others. That's why we established Cherryland Cares—it's our way of lending a hand to northern Michigan nonprofits doing good work in our local communities.

What is Cherryland Cares?

Cherryland Cares is a charitable fund overseen by a group of volunteer members who review grant applications and allocate funds to the nonprofit organizations seeking assistance.

How Does It Work?

It works because of you! Each month, when you choose to round up your electric bill to the nearest dollar, that money goes into the Cherryland Cares fund. A member's average contribution is about \$6 per year.

What its Impact?

In the last decade, our members have given \$400,000 to deserving nonprofit groups in our northern Michigan communities! Groups like Father Fred, Benzie Habitat for Humanity and Rainbow House of Hope have all received Cherryland Cares grants.

Investing your small change in our Cherryland Cares program brings big change in our community.

[Donate Today](#)

Want to learn more about the latest energy news and issues that affect your co-op?

Listen to our podcast Co-op Energy Talk on iTunes and Podbean



Follow us at:



www.cherrylandelectric.coop

Copyright © Cherryland Coop All rights reserved.

Want to change how you receive these emails?

You can [unsubscribe](#) from this list.



Show Your Energy Usage Who's Boss



You've been a Cherryland member for a while now. You've turned on a few lights, paid a bill or two, and hopefully signed up for a SmartHub account.

But have you explored SmartHub's energy use tools yet?

SmartHub provides several tools for you to analyze your past and current usage, as well as plan and conserve in the future. Compare your use and costs, set markers to monitor changes in your usage over periods of time, and get energy saving tips.

Take control of your energy usage today!

[Login to SmartHub](#)

Want to learn more about the latest energy news and issues that affect your co-op?

Listen to our podcast Co-op Energy Talk on iTunes and Podbean



Follow us at:



www.cherrylandelectric.coop

Copyright © Cherryland Coop All rights reserved.

Want to change how you receive these emails?

You can [unsubscribe](#) from this list.



We Give You The Co-op's Profits, Literally.



When you belong to a cooperative, you're not just a member. You're an owner. That means when Cherryland has excess revenue, it eventually goes back to you. This revenue comes in the form of bill credits, known better as capital credits.

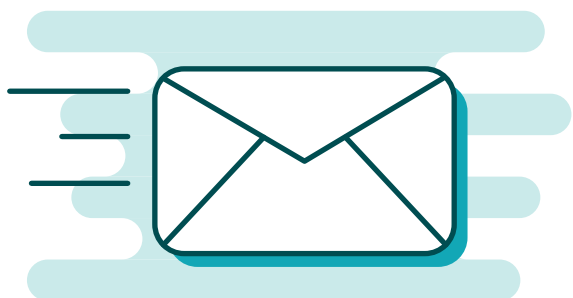
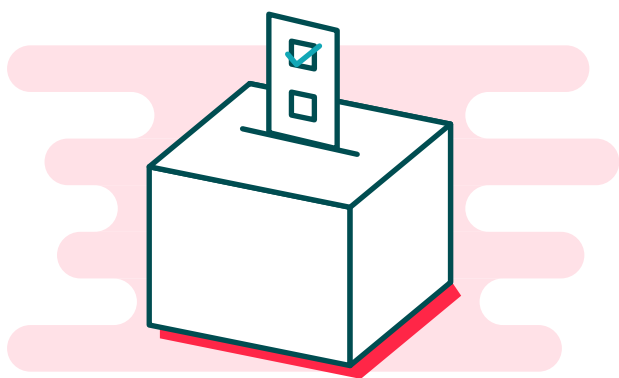
Here's what you need to know about capital credits:

Everyone who buys, or has bought, electricity from Cherryland gets capital credits.



On your June bill, we tell you what your share of the previous year's revenues were. This is not a bill credit, just a notice of what will be retired to you in the future.

If the board of directors believes the co-op is in good financial shape, they vote to retire a portion of the capital credits that were allocated in previous years. Retired capital credits will appear on members' bills as a bill credit in December.



We will continue to mail your capital credits to you even if you move (just let us know your new address).

In other words, it literally pays to be a Cherryland member!

Want to learn more?

[Learn More About Capital Credits](#)

Want to learn more about the latest energy news and issues that affect your co-op?
Listen to our podcast Co-op Energy Talk on iTunes and Podbean



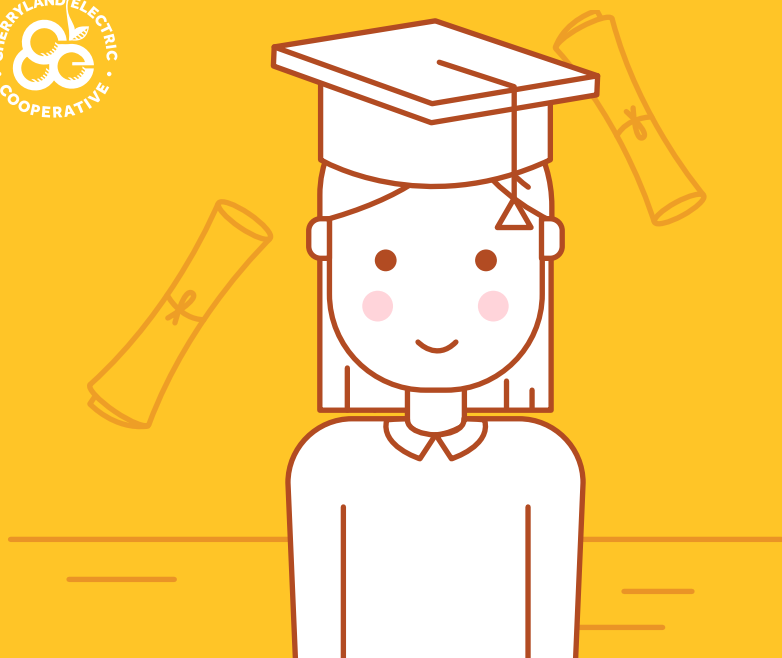
Follow us at:



www.cherrylandelectric.coop

Copyright © Cherryland Coop All rights reserved.

Want to change how you receive these emails?
You can [unsubscribe](#) from this list.



Scholarships, Youth Tour, & Safety Demos, Oh My!

Want a brighter future for your children? We can help!

We know that one of the best investments a community can make is in education. Check out these co-op programs that provide an educational spark in our community.



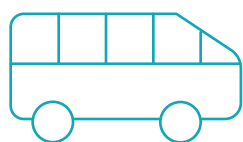
Student Scholarships

Cherryland offers three \$4,000 (\$1,000 for 4 years) college scholarships to high school seniors each year.



Adult Scholarships

Cherryland offers two \$1,000 adult education scholarships each year.



Electric Cooperative Youth Tour

Each year, we sponsor two students from local high schools to represent Cherryland on the Electric Cooperative Youth Tour; a once-in-a-lifetime, all-expenses-paid leadership travel opportunity to Washington, D.C.



Safety Demonstrations

Cherryland's team of specialists is available to give free presentations to schools, civic clubs, or other organizations about industry trends, the co-op business model, electricity 101, and our popular electric safety demo.

[Explore Community Programs](#)

Want to learn more about the latest energy news and issues that affect your co-op?

Listen to our podcast Co-op Energy Talk on iTunes and Podbean



Follow us at:



www.cherrylandelectric.coop

Copyright © Cherryland Coop All rights reserved.

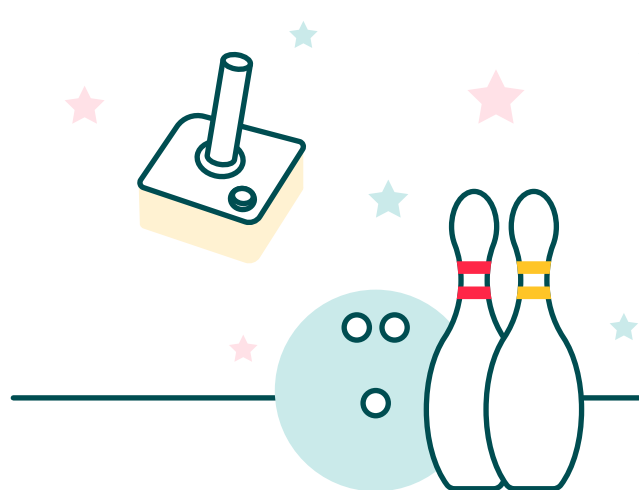
Want to change how you receive these emails?
You can [unsubscribe](#) from this list.



Have Plans for June 21?



Every June we get together at Incredible Mo's in Grawn with more than 1,000 of our fellow co-op members to celebrate the co-op we all love. Come enjoy bowling, live entertainment, bucket truck rides, food, and arcade games for free.



This year's Annual Meeting will be held **June 21 from 4pm to 8pm**. We would love to see you there!

Now, it's not all fun and games. You will also hear updates about the co-op's financials, learn more about the co-op you own, and elect directors to represent you on that board.

Want more information about voting in the board election?

[How To Vote](#)

Want to learn more about the latest energy news and issues that affect your co-op?

Listen to our podcast Co-op Energy Talk on iTunes and Podbean



Follow us at:



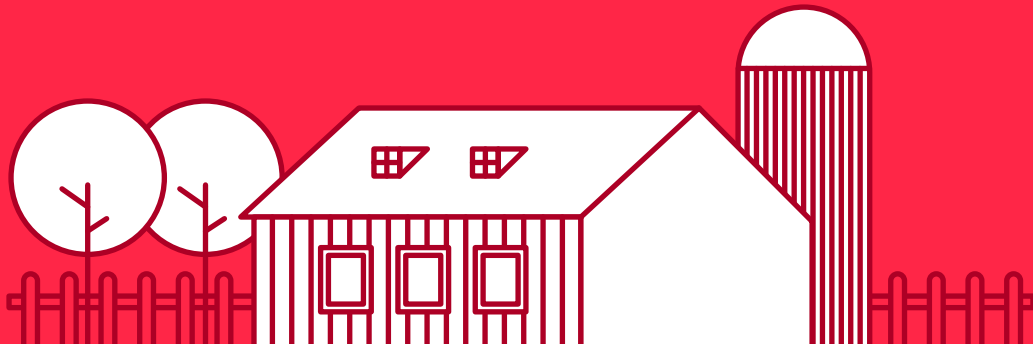
www.cherrylandelectric.coop

Copyright © Cherryland Coop All rights reserved.

Want to change how you receive these emails?
You can [unsubscribe](#) from this list.



Welcome to Cherryland Electric Cooperative!



We are excited to have you as a member! That's right, not customer, member. You are now one of 35,000 northern Michigan residents who own a stake in their local electric cooperative.

At Cherryland, we take pride in bringing reliable and affordable electricity to our members. And with your involvement, we know you will experience that same sense of pride for your co-op every time you flip a switch.

If you have any questions or just want to say hi, we'd love to hear from you.

[Visit Our Website](#)

Want to learn more about the latest energy news and issues that affect your co-op?

Listen to our podcast Co-op Energy Talk on iTunes and Podbean



Follow us at:



Copyright © Cherryland Coop All rights reserved.

Want to change how you receive these emails?
You can [unsubscribe](#) from this list.



3 Easy Steps to Pay Your Bill



Paying your bill should be easy. That’s why we have SmartHub.

With a SmartHub online account, you can pay your bill, monitor your energy usage, report an outage, and more!

Creating an account with SmartHub is easy. Just follow these simple steps:



Step 1. Go to our website.



Step 2. Click “My Account” and then select “New User? Register to use SmartHub!”



Step 3. Give us your account number, zip code, and email address and click “Submit.”

Easy, isn’t it? And if you ever want to access your account on-the-go, download the SmartHub app



Ready to set up your account?

[Create A SmartHub Account](#)

Don’t want to use SmartHub to pay your bill? No problem! Here are a few other ways to pay your bill:



By Phone

Call our main line at (231) 486-9200, and use our easy phone prompts to take care of business.



By Mail

Put your payment in an envelope and mail it to: Cherryland Electric Cooperative, PO Box 500, Grawn, MI 49637



In Person

Drive up and use our 24-hour bill-pay kiosk or stop in and chat with one of our representatives in our Grawn office.

Want to learn more about the latest energy news and issues that affect your co-op?

Listen to our podcast Co-op Energy Talk on iTunes and Podbean



Follow us at:

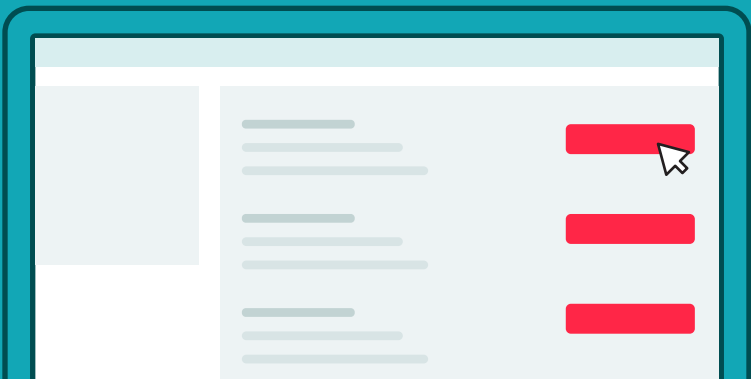


Copyright © Cherryland Coop All rights reserved.

Want to change how you receive these emails?
You can [unsubscribe](#) from this list.



Forget Due Dates. Sign up for Auto Pay!



Why remember to pay your electric bill when we can remember for you?

Our auto pay program allows you to automatically deduct your monthly electric bill payment from your bank account, debit card, or credit card each month. No need to worry about due dates and late fees, your bill is paid automatically!

To set up auto pay, all you need is a SmartHub account and a pair of eyes to watch this video.



[Sign Up For Auto Pay](#)

Want to learn more about the latest energy news and issues that affect your co-op?
Listen to our podcast Co-op Energy Talk on iTunes and Podbean



Follow us at:

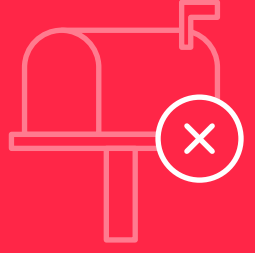
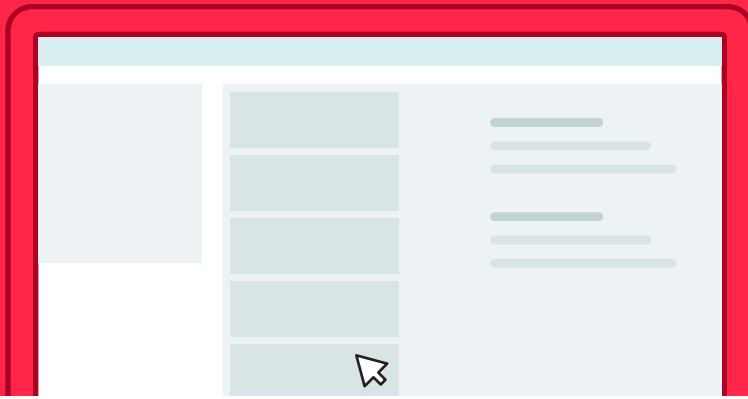


Copyright © Cherryland Coop All rights reserved.

Want to change how you receive these emails?
You can [unsubscribe](#) from this list.



Keep your mailbox clear and go paperless!



By enabling paperless billing, your monthly electric bill is sent directly to your email inbox, instead of coming to your home via U.S. mail. It's convenient and saves a tree or two!

To set up paperless billing, all you need is a SmartHub account and a pair of eyes to watch this video



[Go Paperless](#)

Want to learn more about the latest energy news and issues that affect your co-op?
Listen to our podcast Co-op Energy Talk on iTunes and Podbean



Follow us at:



Copyright © Cherryland Coop All rights reserved.

Want to change how you receive these emails?
You can [unsubscribe](#) from this list.